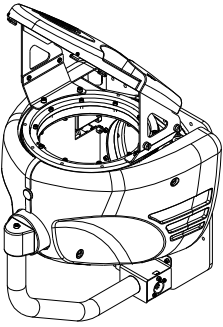
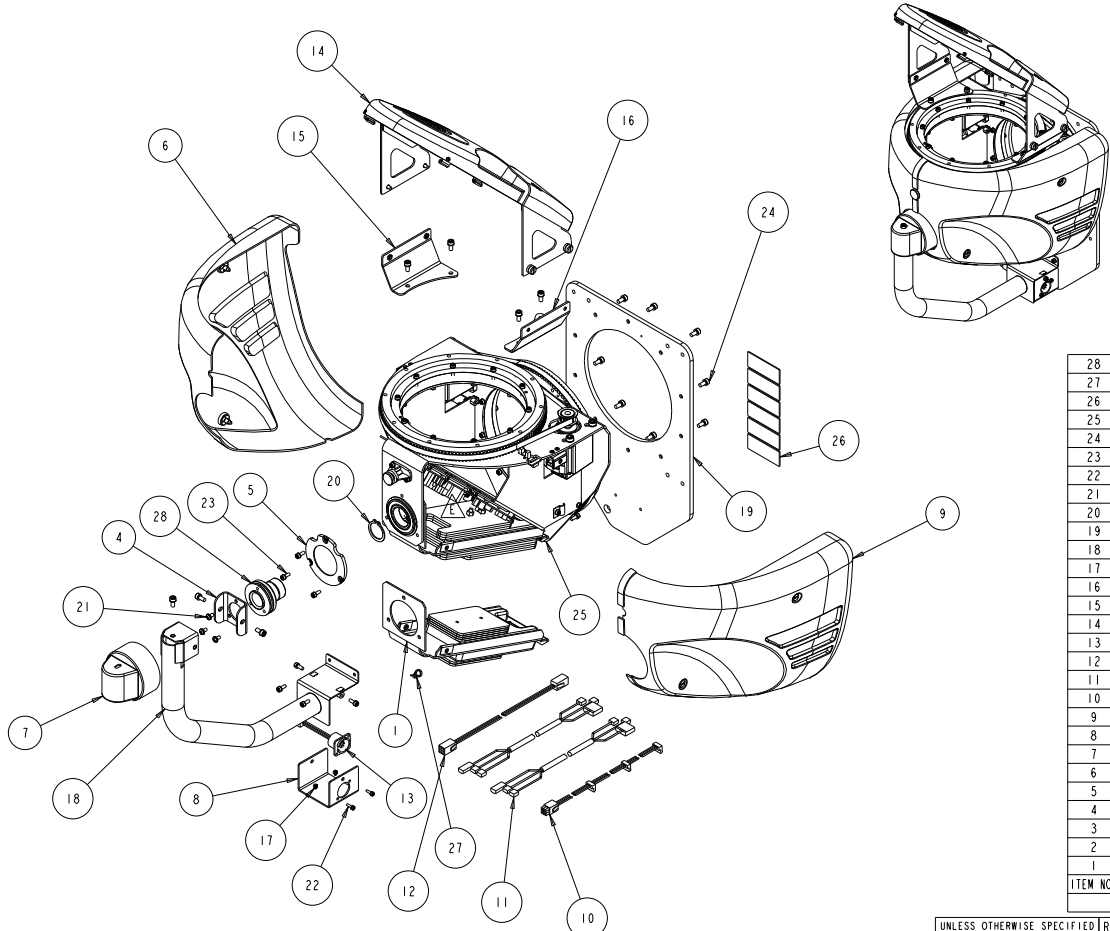


CMA002

REV.	DESCRIPTION	DATE	ENG	ECO #	APPR
-	RELEASE TO PRODUCTION	11MAY06	DF		
A	REMOVED TAPE 90710037, ADDED TAPE 90717018	10JUL06	KDB	#2040	KDB
B	TAPE 90710037 WAS QTY. 8	14JUL06	KDB	#2051	KDB
C	UPDATE CMA004 REV TO 2	20OCT06	KLB	#2099	KDB
D	CHANGED ITEM 2 FROM 90719007 TO 90719068	22JAN07	KLB	#2130	KDB
E	CMA004: BOARD P/N WAS: 80010140, NOW 80010208EF	31MAR08	LR	#2387	LR



**Production Print**  
**High End Systems**

3/31/2008

Issued By: Lee Fredrickson

ITEM NO.	QTY.	FILENAME	PART NO.	REV	DESCRIPTION
28	1	SY305	99140008	C	TUBE, TILT MOTOR BRAKE SIDE, S 250
27	1	TIE_WRAP3-4	99330007	-	TIE WRAP 3in, 4in, 10SC BLK
26	6	TAPE1_00X2_50DBL	90717018	-	TAPE, 3M VHB 4945 1 X 2.5 INCH
25	1	CMA004	INTERNAL	4	SUPPORT PLATE, ASSY, ROBITAL HEAD
24	17	SCREW5AC10BZ	91000510	-	SCREW, M5 SOCKET CAP 10 BZ SEMS
23	9	SCREW4AC10BZ	91000410	-	SCREW, M4 SOCKET CAP 10 BZ SEMS
22	2	SCREW3AC10BZ	91000310	-	SCREW, M3 SOCKET CAP 10 BZ SEMS
21	3	SCREW8-32PPW313BZ	90709136	-	SCREW, 8-32 PHIL PAN 5/16 BZ W/STAR WSHR
20	1	RING1000EXT	90701071	I	RETAINER, RING ZINC YELLOW (1.00 ID)
19	1	CM122	80071719	E	PLATE, FIXTURE MOUNT
18	1	CM110	80550007	A	PIPE ASSY, HARNESS, WELDING
17	2	NUTM3KEP	91201203	-	NUT, M3 KEPS
16	1	CM129	80070369	C	MOUNT, OUTER MIRROR, SHORT RIGHT
15	1	CM130	80070370	C	MOUNT, OUTER MIRROR, SHORT LEFT
14	1	CMA007	INTERNAL	3	MIRROR ASM ,OUTPUT, SVC, ORBITAL HEAD
13	1	CM710	90409115	-	HARNESS, CATALYST, XLR BOX
12	1	CM705	90409116	-	HARNESS, CATALYST, PIPE 9PIN CON
11	2	CM706	90409117	-	HARNESS, CATALYST, MOTOR DRIVE
10	1	CM709	90409120	-	HARNESS, CATALYST HEAD
9	1	CMA025	INTERNAL	I	COVER, ASSY RIGHT, ORBITAL HEAD
8	1	CM115	80071734	A	COVER, TUBE ASSY
7	1	CM219	99080199	A	COVER, PIPE PLASTIC
6	1	CMA024	INTERNAL	I	COVER, ASSY LEFT, ORBITAL HEAD
5	1	CM225	80071740	A	CAP BEARING SUPPORT 910PPG, DIECAST BLK
4	1	CM114	99263109	A	BRACKET, TUBE BEARING, CATALYST
3	1	WP276	90719068	-	BEARING, PEER, 6006-2RS-NR
2	1	CMA013	NEW	I	ASM, SUPPORT AND COUNTERWEIGHT, STEEL
1	1	CMA006	INTERNAL	I	ASM, SUPPORT AND COUNTERWEIGHT

**BILL OF MATERIALS**

UNLESS OTHERWISE SPECIFIED: DIMENSIONAL TOLERANCES: 0 PLACE DECIMAL = ±0.38 1 PLACE DECIMAL = ±0.25 2 PLACE DECIMALS = ±0.13 ANGLES = ±0.5°	RELEASE DATE: ENG: K. BICKERS ME: MEG: DESCRIPTION: ASSY, ORBITAL MIRROR HEAD	CE: OA: DRW: D. FRANKLIN	High End 2105 GRACY FARMS LANE AUSTIN, TEXAS 78758 (512) 836-2242 FAX (512) 832-4128 ***** http://www.highend.com	Lightwave Research													
FOR PAINTED PARTS REFER TO ENG. SPEC. MANUAL WI-0582 ALL COMPONENTS, MATERIALS AND FINISHES TO BE R&HS COMPLIANT	MATERIAL: CHARTED	FINISH: NA	<table border="1"> <tr> <td>SI METRIC A1</td> <td>PART NO. 56040058</td> <td>DRAWING NO. CMA002</td> <td>REV. E</td> </tr> </table>		SI METRIC A1	PART NO. 56040058	DRAWING NO. CMA002	REV. E									
SI METRIC A1	PART NO. 56040058	DRAWING NO. CMA002	REV. E														
<table border="1"> <tr> <td>MIN. DRAFT</td> <td>INTERPRET DIMENSIONS PER ASME Y14.5M-1994</td> </tr> <tr> <td>MIN. RADII</td> <td>THIRD ANGLE PROJECTION</td> </tr> <tr> <td>FLATNESS</td> <td>DIMENSIONS ARE IN MILLIMETERS</td> </tr> <tr> <td>THICKNESS</td> <td></td> </tr> <tr> <td>VOLUME</td> <td></td> </tr> </table>		MIN. DRAFT	INTERPRET DIMENSIONS PER ASME Y14.5M-1994	MIN. RADII	THIRD ANGLE PROJECTION	FLATNESS	DIMENSIONS ARE IN MILLIMETERS	THICKNESS		VOLUME		<table border="1"> <tr> <td>DO NOT SCALE</td> <td>SCALE: 0.143</td> <td>SHEET: 1 OF 1</td> </tr> </table>			DO NOT SCALE	SCALE: 0.143	SHEET: 1 OF 1
MIN. DRAFT	INTERPRET DIMENSIONS PER ASME Y14.5M-1994																
MIN. RADII	THIRD ANGLE PROJECTION																
FLATNESS	DIMENSIONS ARE IN MILLIMETERS																
THICKNESS																	
VOLUME																	
DO NOT SCALE	SCALE: 0.143	SHEET: 1 OF 1															

**PROPRIETARY NOTICE:**  
THIS DOCUMENT CONTAINS CONFIDENTIAL AND PROPRIETARY INFORMATION OF HIGH END SYSTEMS INC., (ALSO DBA LIGHTWAVE RESEARCH) AND IS GIVEN TO THE RECEIVER IN CONFIDENCE. THE RECEIVER ACCEPTS AND AGREES THAT, EXCEPT AS AUTHORIZED BY HIGH END SYSTEMS, THE RECEIVER WILL NOT PERMIT THE USE OF THE DOCUMENT OR ANY COPY THEREOF OR THE INFORMATION THEREIN, WILL NOT COPY OR PERMIT COPYING THE DOCUMENT OR THE INFORMATION THEREIN, AND WILL UPON COMPLETION OF THE NEED TO RETURN THE DOCUMENT, OR UPON DEMAND, RETURN THE DOCUMENT WITHOUT RETAINING ANY OF THE INFORMATION CONTAINED THEREIN IN ANY FORM WHATSOEVER.